

DAIHATSU

Rocky

GI

GENERAL INFORMATION

HOW TO USE THIS MANUAL	GI- 2
IDENTIFICATION INFORMATION	GI- 4
VEHICLE MODELS	GI- 6
BODY COLOR INFORMATION	GI- 7
JACKING POINTS AND SUPPORTING POINTS OF SAFETY STANDS	GI- 8
GENERAL SERVICE INSTRUCTIONS	GI-11
HANDLING INSTRUCTIONS ON CATALYTIC CONVERTER-EQUIPPED VEHICLES	GI-13
ABBREVIATION CODES	GI-14

WRU92-GI039

HOW TO USE THIS MANUAL

In this service manual, the entire portion is divided into 21 sections and three supplements. Each section has a table of contents in the beginning. For easier reference, a thumb index is provided. Also, the upper part of each page bears the section title concerned so that you may use this manual readily and fully.

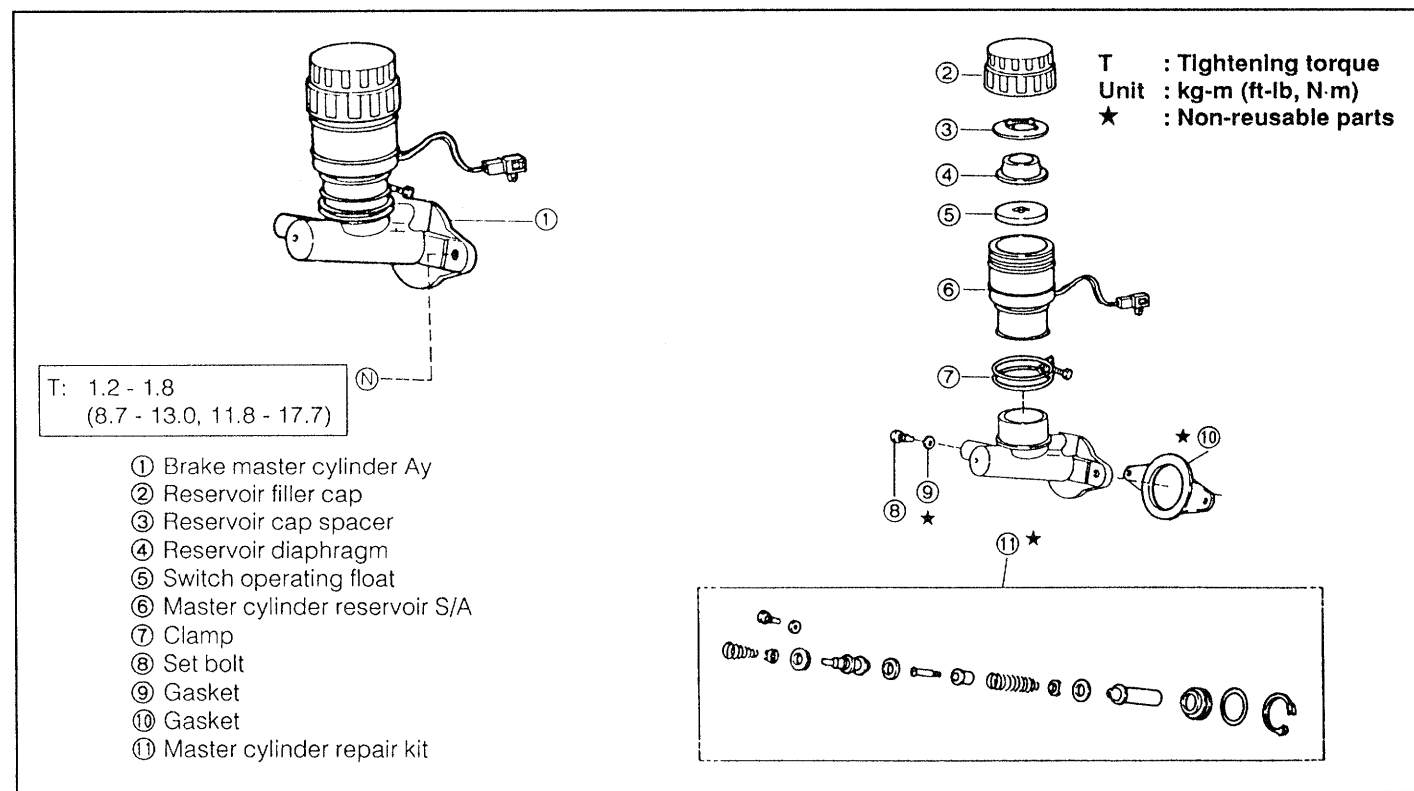
WRU90-GI002

CONTENTS OF EXPLANATION

1. Schematic Diagram of Components

- (1) The schematic diagram of components that appears at the beginning of each section describes the nomenclature and installed conditions of each component. Also, the tightening torque is posted in the figure.
- (2) Those parts whose reuse is not permitted bear a "★" mark for an identification purpose. Be certain to replace these parts with new ones during the assembly.

(Example)



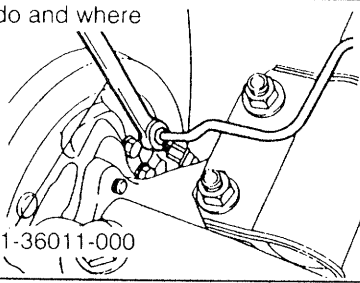
WRU90-GI003

2. Servicing Procedure

- (1) In principle, the servicing procedure is described in the following sequence given below:
Removal → Inspection → Installation, and Disassembly → Inspection → Assembly.
- (2) The explanation covers detailed servicing methods, specifications and notes.
- (3) The main point of each item explains the servicing section and servicing procedure, using illustrations.

WRU90-GI004

(Example)

What to do	How to do it	What to do and where
3. Brake tube installation (1) Install the brake tube to the wheel cylinder temporarily by hands. (2) Tighten the brake tube to the wheel cylinder, using the following SST. SST: 09751-36011-000		

(4) The inspection section in this manual describes only checking operation. Therefore, if you find any malfunction, replace the defective parts with new ones.

WRU90-GI005

3. SST

For those operations which require the use of any SST, the SST numbers concerned are given in bold letters.

Also, a table of all SSTs is collectively posted in the Appendix Data A.

4. Service Specifications

Service specifications are indicated in bold letters or enclosed by heavy lines. Be certain to confirm the specifications concerned.

Service specifications are collectively posted in the Appendix Data B.

5. Tightening Torque

For those operations which require the control of tightening torque, the relevant tightening torque is given in bold letters. Be certain to confirm the tightening torque concerned. Tightening torque specifications are collectively posted in the Appendix Data C.

6. Definitions of Terms

Specified Value A value which represents the allowable range during the inspection and adjustment.

Limit A maximum or a minimum limit which the value should not exceed or fall below.

7. WARNING, CAUTION & NOTE:

All these symbols are indicated in bold letters.

WARNING:

This symbol means that there is a possibility of personal injury of the operator himself or the nearby workers if the operator fails to follow the operating procedure prescribed in this manual.

CAUTION:

This symbol means there is a possibility of damage to the component being repaired if the operator fails to follow the operating procedure prescribed in this manual.

NOTE:

To accomplish the operation in an efficient manner, additional instructions concerning the operation are given in this section.

WRU90-GI006

IDENTIFICATION INFORMATION

VEHICLE IDENTIFICATION NUMBER

The vehicle identification number is on the left top of the instrument panel and on the cossmember of the vehicle front section.

J D 2 B F 3 1 0 X N 6 3 0 0 0 2 0

Serial
Number

Factory Code
6: Ikeda No.2
Factory

Model Year
N: 1992

Check digit

Engine
0: HD EFI

Series, GVWR
1: SE, B class
2: SX, B class

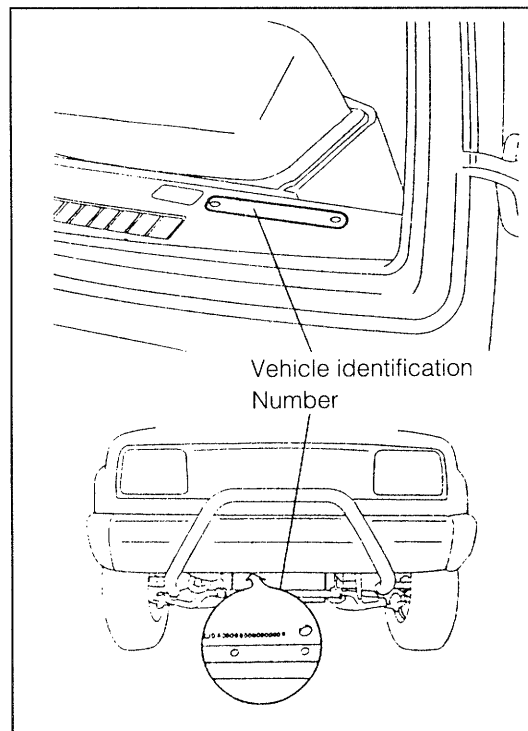
Model
3: F300

Car line
F: ROCKY

Body type
B: RESIN TOP (HARD TOP)
F: SOFT TOP

Vehicle type
2: MULTIPURPOSE CAR

Manufacturer Code
JD: Japan, Daihatsu

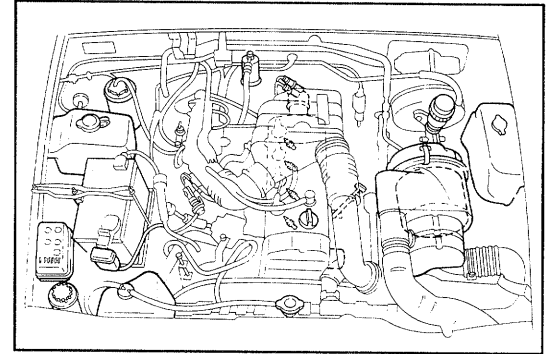


WRU92-G1033

MANUFACTURER'S PLATE

1. Position of Manufacturer's Plate

The manufacturer's plate is affixed on the cowl panel inside the engine compartment.



WRU90-GI008

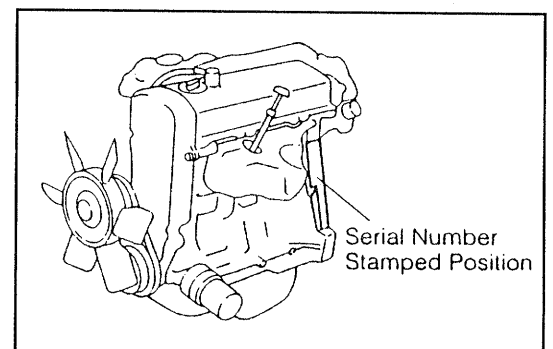
2. Contents of Manufacturer's Plate

(1)	DAIHATSU MOTOR CO.LTD.JAPAN									
(2)	TYPE									
(3)	CHASSIS NO									
(4)	ENGINE									
(5)	COLOR				TRIM					
	ENGINE NO									
	ダイハツ工業株式会社									

- (1) Manufacturer's name, Country
- (2) Vehicle model
- (3) Chassis No. (This column is not used currently.)
- (4) Engine type (This column is not used currently.)
- (5) Body colors code
- (6) Trim code
- (7) Engine No. (This column is not used currently.)
- (8) Manufacturer's name in Japanese.

ENGINE SERIAL NUMBER

The engine serial number is stamped on the side wall of the cylinder block at the transmission side.



WRU90-GI009

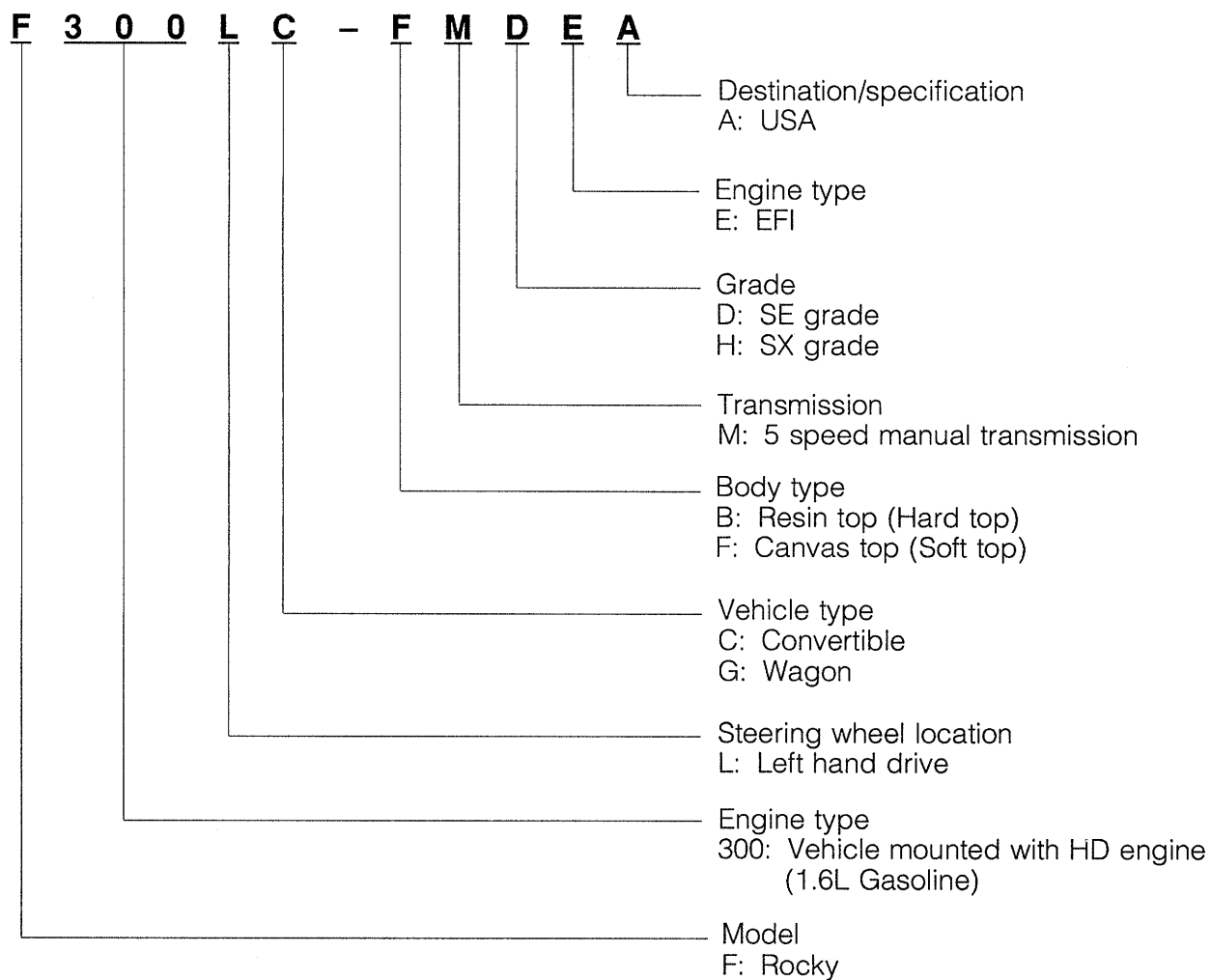
GENERAL INFORMATION

VEHICLE MODELS

Model code	Engine	Transmission	Transfer	Brakes
F300LG – BMDEA F300LG – BMHEA F300LC – FMDEA F300LC – FMHEA	HD	5 M/T	Part time	Front Disc Brake

WRU92-GI036

Explanation of vehicle model code



WRU90-GI011

BODY COLOR INFORMATION

Color code	Color	Color code	Color
045	White	25L (3HI/168)	Red Mica/Gray Metallic
3HI	Red Mica	NA5 (6A5/168)	Black Metallic/Gray Metallic
168	Gray Metallic	NB1 (G09/168)	Green/Gray Metallic
6A5	Black Metallic	NB3 (G12/168)	Trad Green Metallic/Grey Metallic
		NB4 (B22/168)	Marine Blue Metallic/Grey Metallic

WRU92-GI034

COLOR CODE OF THE WORLD

Color	CODE					
	DAIHATSU	AKZO	DUPONT	ICI	SPIES HECKER	STANDOX
WHITE	045	DAH045	L8997	NW-80	16067	045
RED MICA	3HI	DAH3HI	G8730	PC86B	97805	3HI
GRAY. M	168	DAH168	N8832	B936B	97728	168
BLACK. M	6A5	DAH6A5	G8742	A403B	97806	6A5
TWO TONE	25L	DAH25L	G8730/N8832	PC86B/B936B	48226	25L
TWO TONE	NA5	DAHNA5	G8742/N8832	B929B/B936B	48233	NA5
TWO TONE	NB1	DAHNB1	N9305/N8832	XW13/B936B	48480	NB1
TWO TONE	NB3	DAHNB3	L9652/N8832	D575B/B936B	48715	NB3
TWO TONE	NB4	DAHNB4	L9651/N8832	D576B/B936B	48716	NB4

Trim informations

F D S1

Trim color code
S1: Gray

Serial code
A code that has been set in alphabetical order.

Seat main material
F, Y: Fabric
L: Printed leatherette

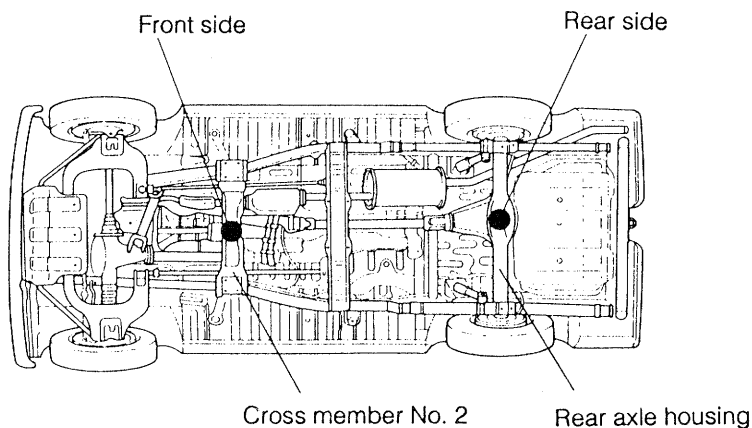
WRU92-GI035

JACKING POINTS AND SUPPORTING POINTS OF SAFETY STANDS

- **Jacking point**

Front side Cross member No.2

Rear side Rear axle housing



WRU90-GI014

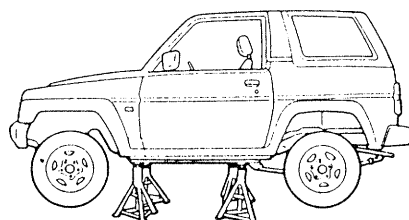
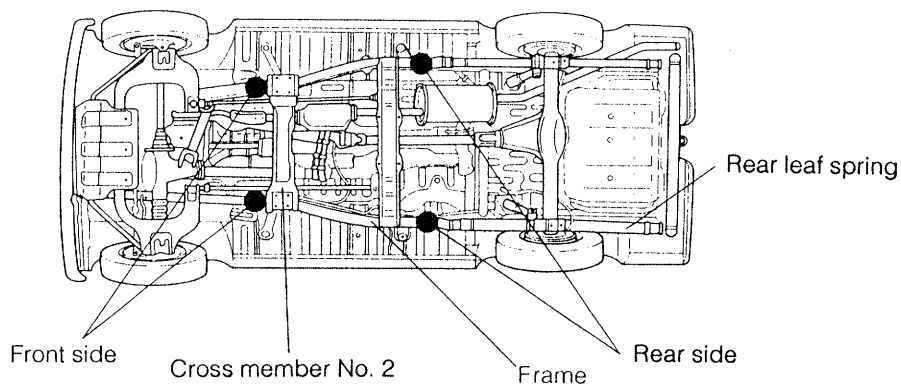
SUPPORTING POINTS OF TWO-POST LIFT

Align the supporting pads of a two-post lift with the supporting points of safety stands, as indicated in the figure below.

- **Supporting points**

Front side Frame (In front of the crossmember No.2)

Rear side..... Frame (In front of the rear leaf spring)



WRU90-GI015

TOWING INFORMATION

We recommend using a towing dolly.
If the wheels or axles are damaged, must be used a towing dolly.

WARNING

Under no circumstance should a person be allowed to ride in a vehicle being towed when the front or rear wheels on the ground.

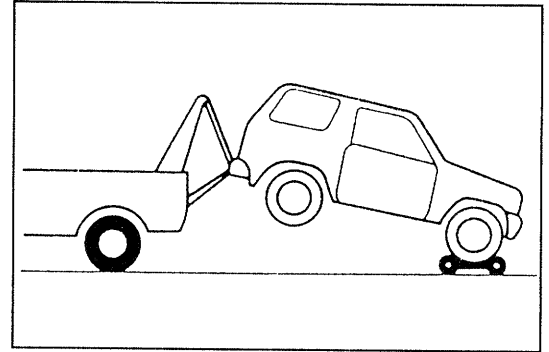
1. Towing with four wheels on ground

The following steps must be performed.

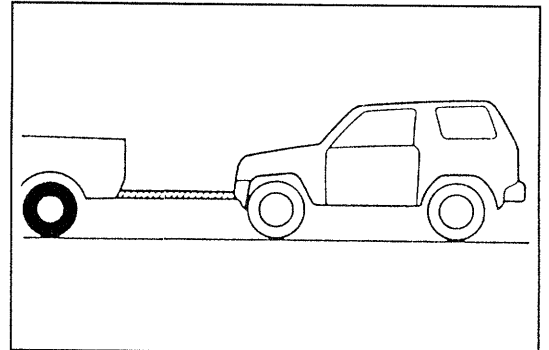
- (1) Parking brake must be released.
- (2) Transmission must be placed in the "NEUTRAL" position.
- (3) Transfer shift lever must be placed in "2H" on Part-time 4WD vehicle.
- (4) Ignition key must be placed in the "ACC" position.
The locking hubs must be placed in the "FREE" position.
- (5) Free wheeling hubs or automatic
- (6) Wheels, axles, drive train and steering must be in good condition.
- (7) Towing speed does not exceed 30 mph (50 km/h).
- (8) Maximum towing distance must be 200 miles (300 km).

CAUTION

- (1) The vehicle can be towed in this manner only when wheels, axles, drive train, steering or brakes are in good condition. Otherwise never try to tow in this manner.
- (2) A driver must ride in the vehicle to maneuver it and operate the brakes.
- (3) When the engine is not running, the brake booster and power steering do not operate. Therefore braking and steering will require much more effort than usual.



WRU90-GI016



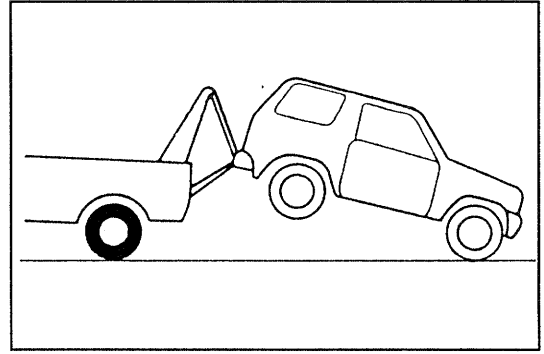
WRU92-GI037

GENERAL INFORMATION

2. Towing with front wheels on ground.

The following steps must be performed.

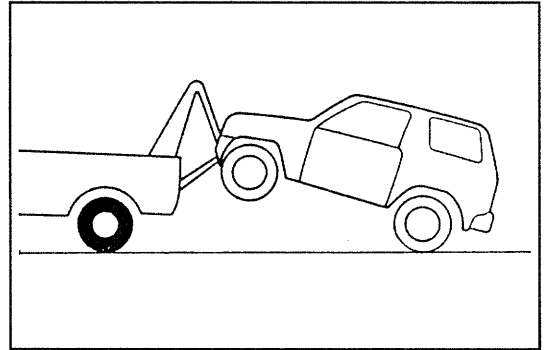
- (1) Transmission must be placed in the "NEUTRAL" position.
- (2) Transfer shift lever must be placed in "2H" on part-time 4WD vehicle.



WRU90-GI018

3. Towing with rear wheels on ground.

- (1) Release the parking brake.
- (2) Same as above 2-(2) to 2-(5) procedure must be performed.



WRU90-GI022

GENERAL SERVICE INSTRUCTIONS

1. Use fender covers, seat covers or floor sheets so that the vehicle may not get dirty or be scratched.
2. Jacking up
 - (1) When only the front section or rear section of the vehicle is jacked up, be sure to place chocks at the wheels so as to insure safe operations.
 - (2) When the vehicle has been jacked up, be sure to support the vehicle at the specified section using safety stands. (See page GI-14)
3. Handling instructions related to battery
 - (1) Before you start performing the electrical works, make certain to disconnect the battery cable from the negative (-) terminal of the battery.
 - (2) When it becomes necessary to disconnect the battery cables for the purpose of carrying out, checks or repairs, always start at the negative (-) battery terminal which is grounded to the body.
 - (3) To avoid damaging the battery plates, after the terminal nut has been loosened, pull out the battery cable straight upward, rather than turning or prying the terminal.
 - (4) Clean the battery terminal posts or cable terminals, using a cloth. Never use a file or other adhesive agents.
 - (5) When connecting the cable terminal to the battery, first the cable terminal should be fitted onto the battery post with the attaching nut in a loose state. Then, tighten the nut. Never tap the terminal onto the battery post, using a hammer.
 - (6) As for the cover at the positive (+) terminal side, be sure to install it at the correct position.
 - (7) When charging the battery, be certain to disconnect the ground cable terminal from the battery negative terminal.
4. Repairing of fuel system

On the EFI engine, a fairly high pressure is applied to the fuel of the fuel system. Therefore, the following notes given below should be observed:

 - (1) When the union bolt is removed take a measure to prevent the fuel from splashing on a clothes or the like. Slacken the union bolt gradually.
 - (2) Tighten each connecting section to the specified torque.
 - (3) Attach the specified clip to each connecting section.
5. For increased work efficiency and improved accuracy, be sure to utilize the SSTs effectively.
6. Removal and disassembly
 - (1) When disassembling complicated components, put stamped marks or mating marks on those sections where such marks do not affect their functions so that the assembling operation may be performed easily.
 - (2) Each time a part is removed, check the part for the assembled condition, deformation, breakage, roughness and scratches.
 - (3) Arrange the disassembled parts in the disassembling order. In addition, separate and arrange those parts to be replaced and those parts to be reused.
 - (4) Thoroughly clean and wash those parts to be reused.
 - (5) Inspection and measurement of parts

Perform thorough inspection and measurement on those parts to be reused, as required.
7. Installation and assembly
 - (1) Assemble satisfactory parts, following the proper procedure and specified standards. (adjusting values and tightening torque, etc.)
 - (2) Ensure that seal packings and grease are applied to those sections where such application is needed.
 - (3) Be sure to use new packings, gaskets, cotter pins and so forth.
 - (4) Ensure that only the specified bolts and nuts should be used. Moreover, where specified, make sure to employ a torque wrench to tighten bolts and nuts to the specified torque.

Make sure to use only genuine parts for every replacement.

GENERAL INFORMATION

8. Adjustment and operation check

Adjust the reassembled or replaced components to the servicing specifications, using gauges and testers, as required.

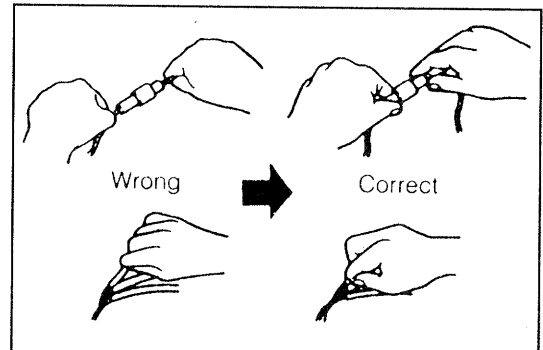
9. Handling of hoses, etc.

- (1) Connect fuel hoses and water hoses, etc. securely so that they exhibit no leakage.
- (2) When disconnecting fuel hoses, make sure that no fuel is splashed around the hose. (Special care must be exercised to the engine mounting rubber, etc., for there is the possibility that the rubber is deteriorated by the gasoline-based liquid.)

WRU90-GI027

10. Observe the following precautions to avoid damage to the parts.

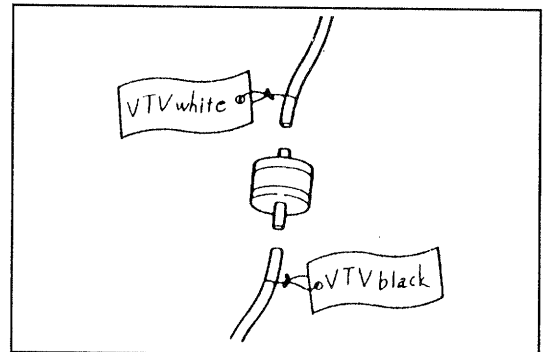
- (1) When pulling out vacuum hoses, be sure to hold the hose end, not the middle part of the hose.
- (2) When disconnecting connectors, be sure to hold the connector itself, not the wire portion.
- (3) Be very careful not to drop electrical components, such as sensors or relays, to the floor. If they are dropped, they must be replaced. Never reuse them.
- (4) When steam cleaning the engine, take precautionary measures so that no water is applied to the air filter, EFI components, distributor, ignition coil and so forth.
- (5) Never use an impact wrench to remove or install thermo switches or thermo sensors.
- (6) When checking continuity at the wire connector, insert the tester probe carefully to prevent terminals from bending.
- (7) When using a vacuum gauge, never force the hose onto a connector that is too large. Use a step-down adapter instead. Once the hose has been stretched, it may leak.



WRU90-GI028

11. Tag hoses before disconnecting them:

- (1) When disconnecting vacuum hoses, use tags to identify how they should be reconnected.
- (2) After completing a job, double check that the vacuum hoses are properly connected. A label under the hood shows the proper layout.



WRU90-GI029

12. The dimensions and specified values that appear in this manual are those values at 20°C (68°F), unless otherwise specified.

13. Handling of clamps

Be certain to reassemble securely in the respective original positions.

14. Touch-up painting

If the bolts, etc. have been removed for the body alignment work and so forth, touch up any scratch on the paint finish of the body and bolts, using the same vehicle body color.

WRU90-GI030

HANDLING INSTRUCTIONS ON CATALYTIC CONVERTER-EQUIPPED VEHICLES

WARNING:

When a great amount of unburnt gas is admitted into the catalytic converter, overheating is prone to occur, resulting in a fire hazard.

To avoid such trouble in advance, be certain to observe the following precautions. Also, be sure to explain such precautions to your customers.

1. Use only unleaded gasoline in your vehicle.
2. Avoid idling the engine for a prolonged periods of time.
Do not run the engine continuously at fast idle speed for more than 10 minutes; at the idle speed for more than 20 minutes.
3. Never perform spark jump tests.
 - (1) The spark jump test must be limited to cases where such test is absolutely necessary. Also, be sure to finish the test in the shortest possible time.
 - (2) Never race the engine during the test.
4. Do not run the engine when the fuel tank becomes nearly empty.
Failure to observe this caution will cause misfiring. Also, it will apply excessive load to the converter, even leading to catalyst damage.
5. Do not dispose the waste catalyst in conjunction with parts contaminated with gasoline or oil.

WRU90-GI031

ABBREVIATION CODES

The abbreviation codes that appear in this Service manual stand for the following.

A/C, AC	Air Conditioner
ACV	Air Control Valve
Ay	Assembly
BDC	Bottom Dead Center
BTDC	Before Top Dead Center
BVSV	Bimetal Vacuum Switching Valve
ECU	Electronic Control Unit
EFI	Electronic Fuel Injection
EGR	Exhaust Gas Recirculation
EVSV, EGR VSV	EGR Vacuum Switching Valve
EX	Exhaust (Manifold, Valve)
FC	Fuel pump Control
FL, F/L	Fusible Link
IN	Intake (Manifold, Valve)
ISC	Idle Speed Control
LH	Left Hand
LHD	Left Hand Drive
LLC	Long Life Coolant
M/T, MT	Manual Transmission
MP	Multipurpose
N·m	Newton meter
O ₂ S	Oxygen Sensor
PCV	Positive Crankcase Ventilation
PVSV	Pressure Vacuum Switching Valve
RH	Right Hand
SST	Special Service Tool
STD	Standard
T/F, TF	Transfer
TDC	Top Dead Center
TP	Throttle Positioner
TWC	Three-way Catalyst
VSV	Vacuum Switching Valve
VTV	Vacuum Transmitting Valve
W/	With
W/O	Without
2WD	Two-wheel Drive Vehicle
4WD	Four-wheel Drive Vehicle

The abbreviation codes that appear in the figure stand for the following.

Ⓑ	Bolt	Ⓢ	Screw
Ⓝ	Nut	Ⓦ	Washer